



8mmx100mm (G.I)
ANCHOR FASTNER
MAKE WURTH

EXTRUDED L BRACKET
82X40X63X3MM THK

8mmx100mm
SS THREAD NUT/BOLT/WAISHER
(grade 316)

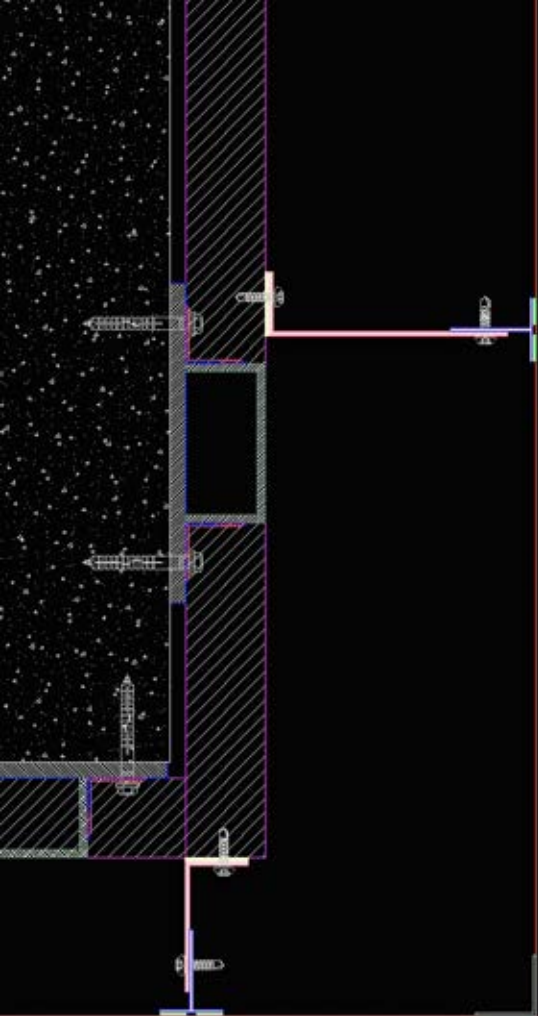
EXTRUDED T PROFILE
PLAIN ANODISED-6063-T
50X40X2MM THK



DOW SIL 795
STRUCTURAL SEALANT

2MM THK PANEL

COLOR SILICON-WEATHER GRADE
MAKE ALSTONE



SS ANCHOR FASTNER
16x150mm

10mmx100mm (G.I)
Thread rod with
Nut/Waiser

EXTRUDED T PROFILE
PLAIN ANODISED-6063-T
50X40X2MM THK

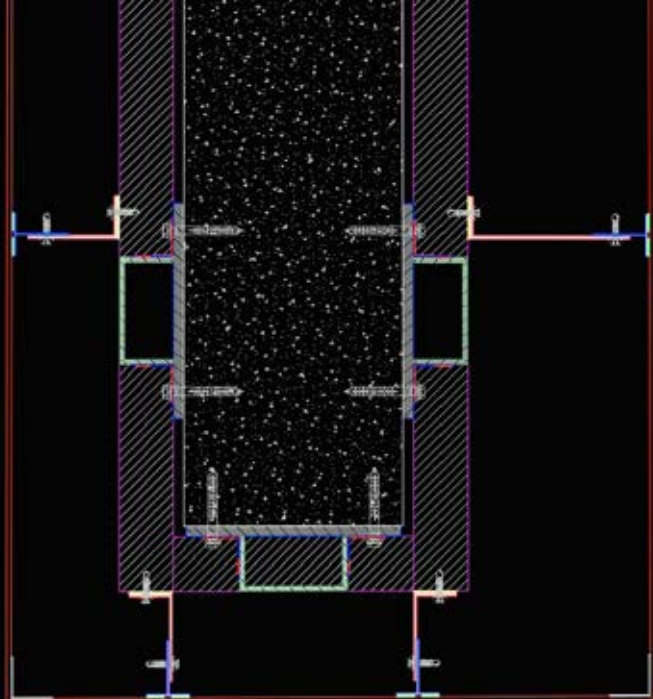
8mmx100mm
SS THREAD
NUT/BOLT/WAISHER
(grade 316)

ISMC
100X50X5MM THK

EXTRUDED L BRACKET
82X40X63X3MM THK

200X200X10MM THK
MS BASE PLATE
BOLTED TO BEAM

ALUMIINIUM I PROFILE FOR
STIFFNER
38X38X1.5MM



SS ANCHOR FASTNER
16x150mm

10mmx100mm (G.I)
Thread rod with
Nut/Waisher

EXTRUDED T PROFILE
PLAIN ANODISED-6063-T
50X40X2MM THK

8mmx100mm

SS THREAD
NUT/BOLT/WAISHER
(grade 316)

ISM
100X50X5MM THK

EXTRUDED L BRACKET
82X40X63X3MM THK

200X200X10MM THK
MS BASE PLATE
BOLTED TO BEAM

ALUMINIUM I PROFILE FOR
STIFFNER
38X38X1.5MM

4MM THK PANEL