

**pigmento**

# PIGMENTO

---

STYLE, DIVERSITY AND QUALITY FOR INTERIORS AND EXTERIORS!



# PIGMENTO

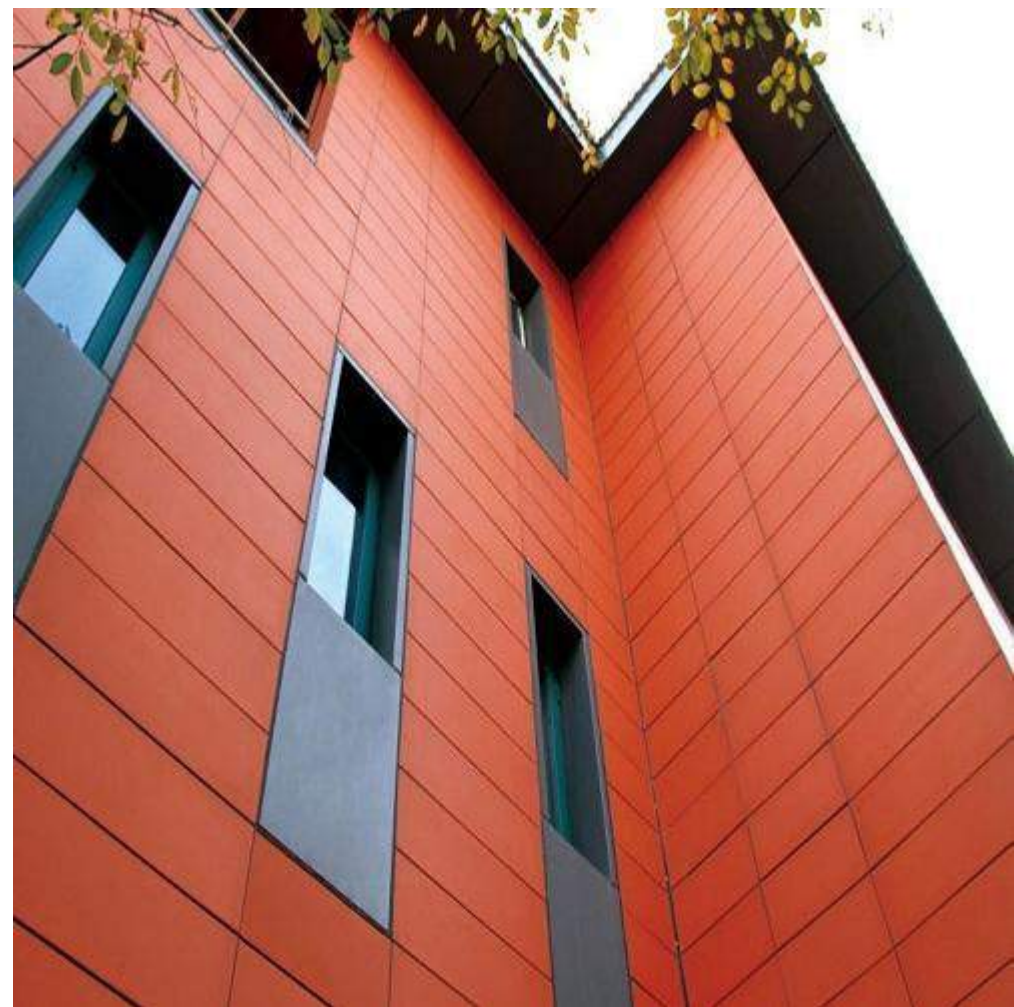
---

Natures soft , elegant colour palette is perfectly matched to pigmento's subtle and authentic fibre cement shades.

This through- colored Homogenous fibre cement panel attains an unparalleled natural texture as a result of its dynamic production process.

It's fibre cement material, delicate surface texture and carefully matched full-body color lend each Pigmento panel a pleasant natural appearance and surface feel for unmistakable uniqueness.

- HOMOGENEOUS
- FIRE RESISTANT
- CNC CUTTING
- ENGRAVING
- 3D / DIGITAL PRINTING



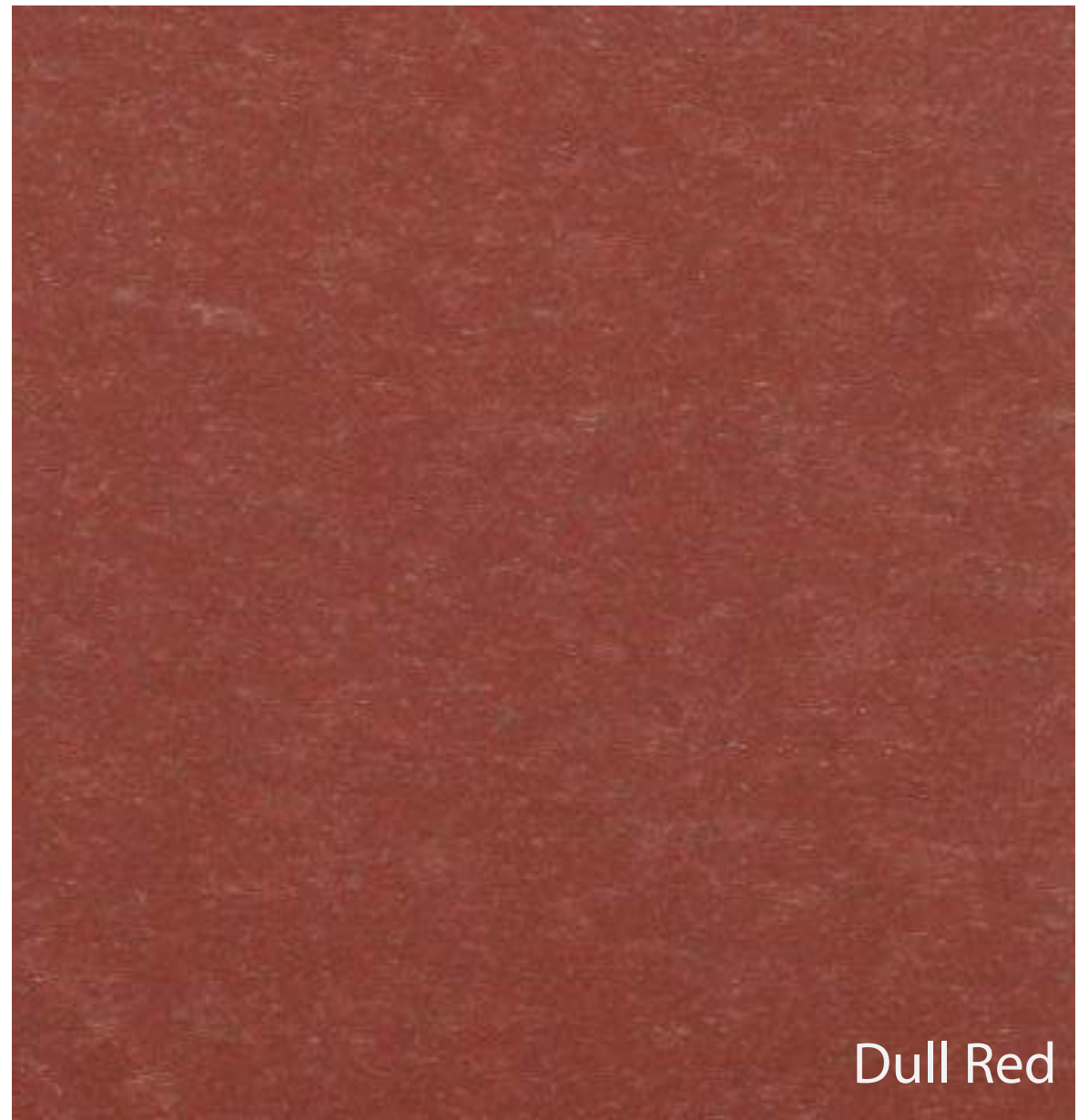


## SPECIFICATIONS

- **THICKNESS** : 8/9/12/15/18MM
- **SIZES** : 4FT X 8FT
- **WEIGHT** : 42KG | 4FTX8FT | 9MM
- **FIRE RATED** : YES
- **INSTALLATION:** DRY CLADDING



Pastel Ivory



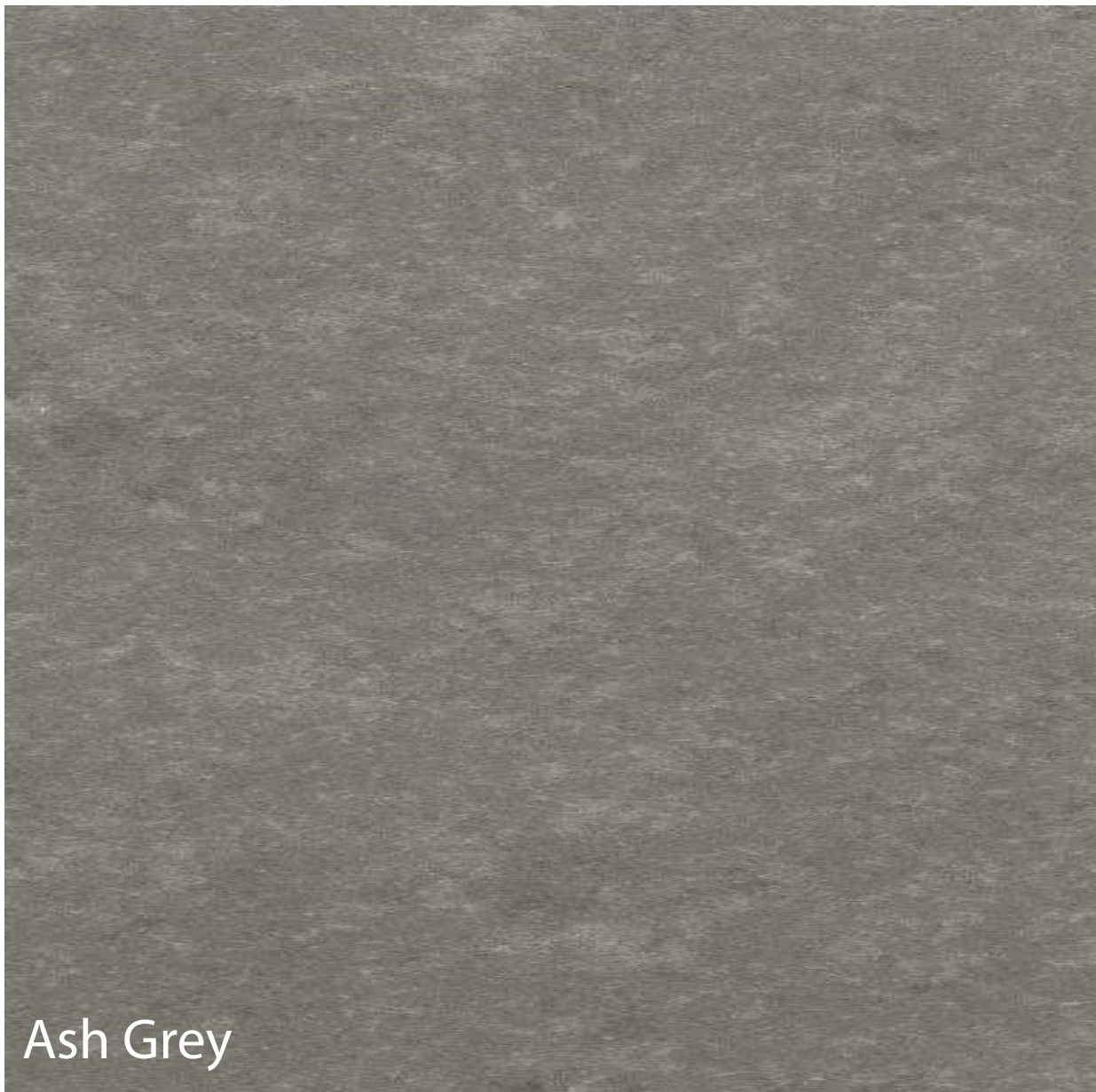
Dull Red



Tangy Orange



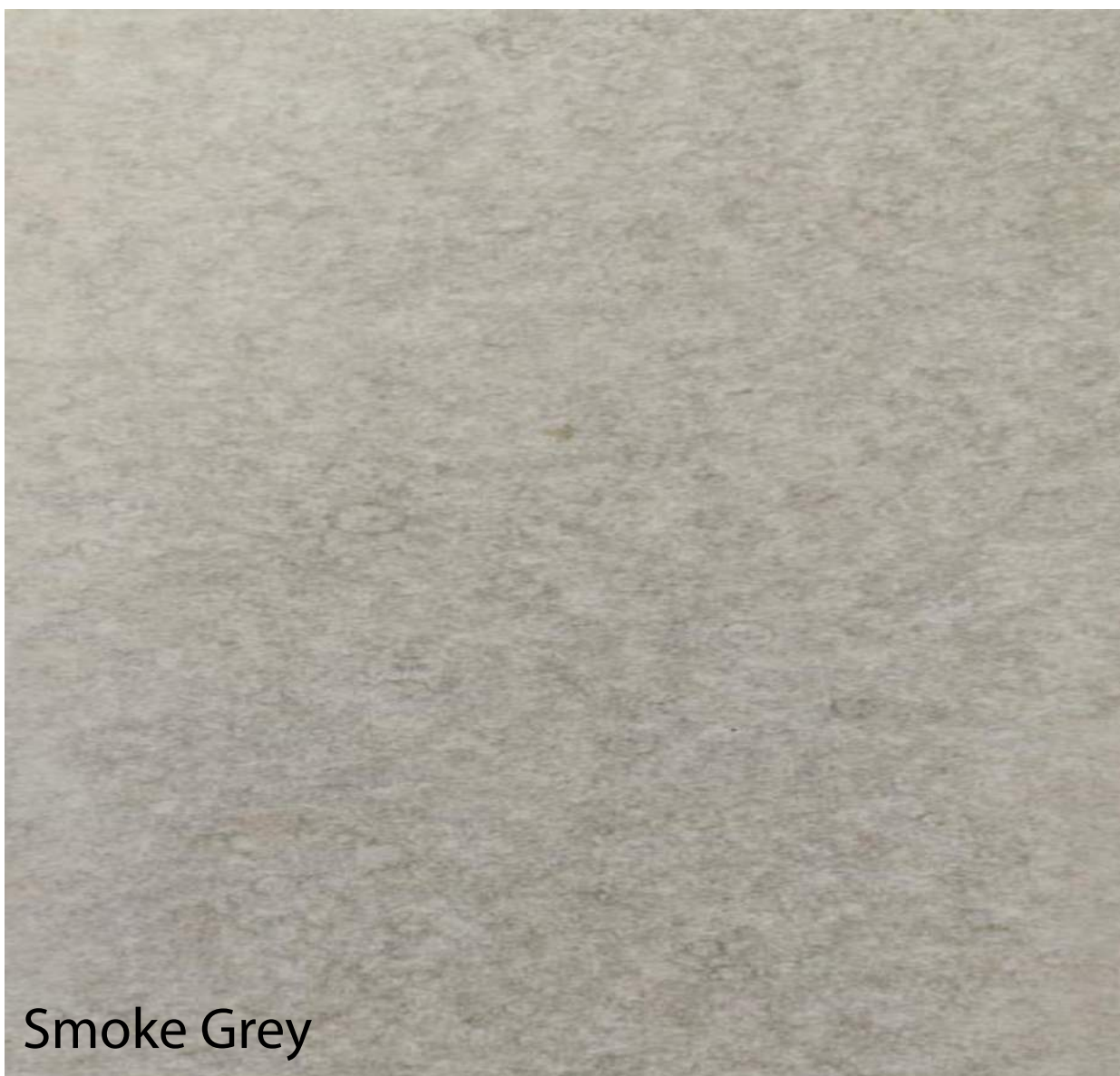
Snow White



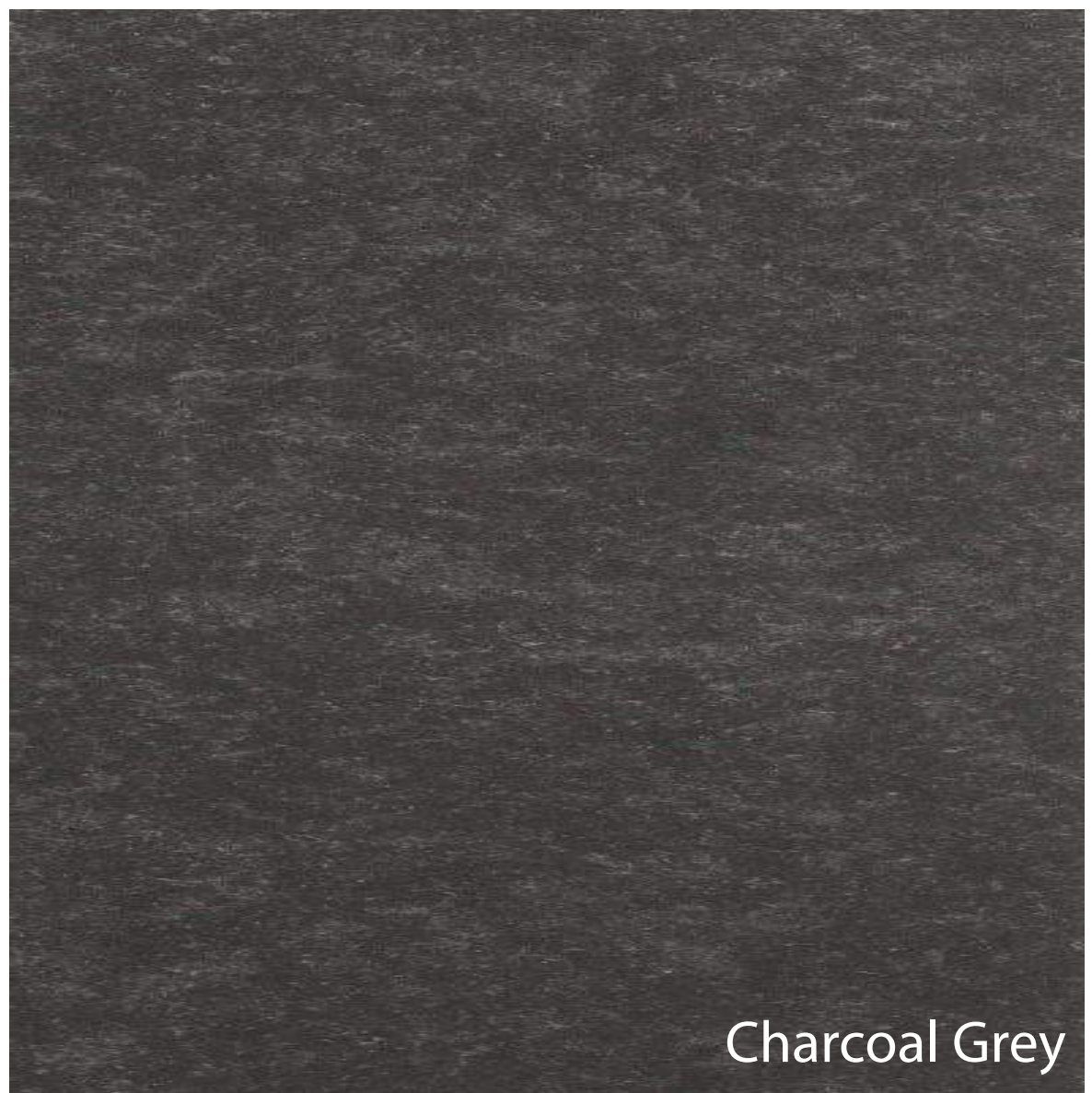
Ash Grey



Mustard Yellow

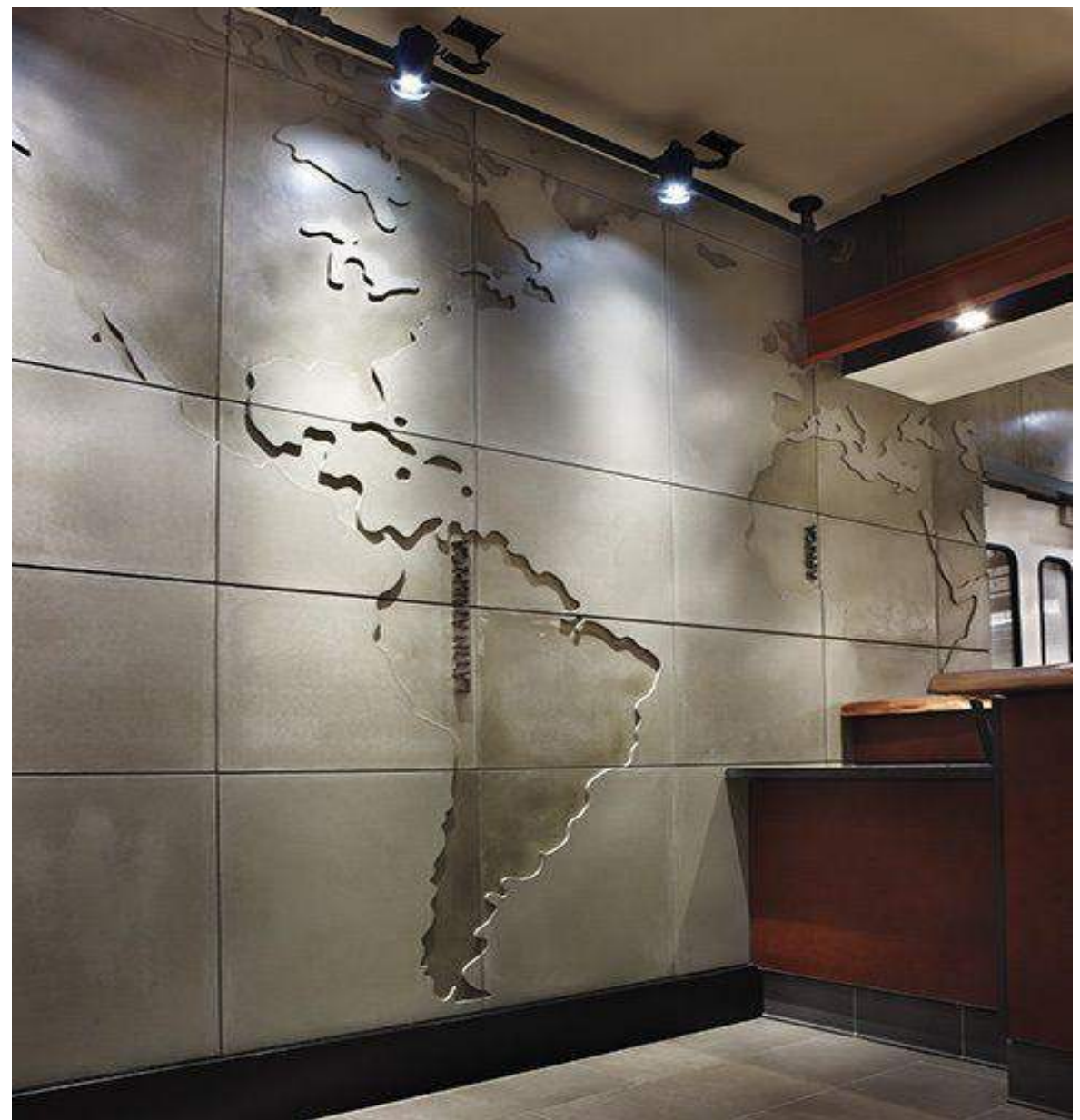


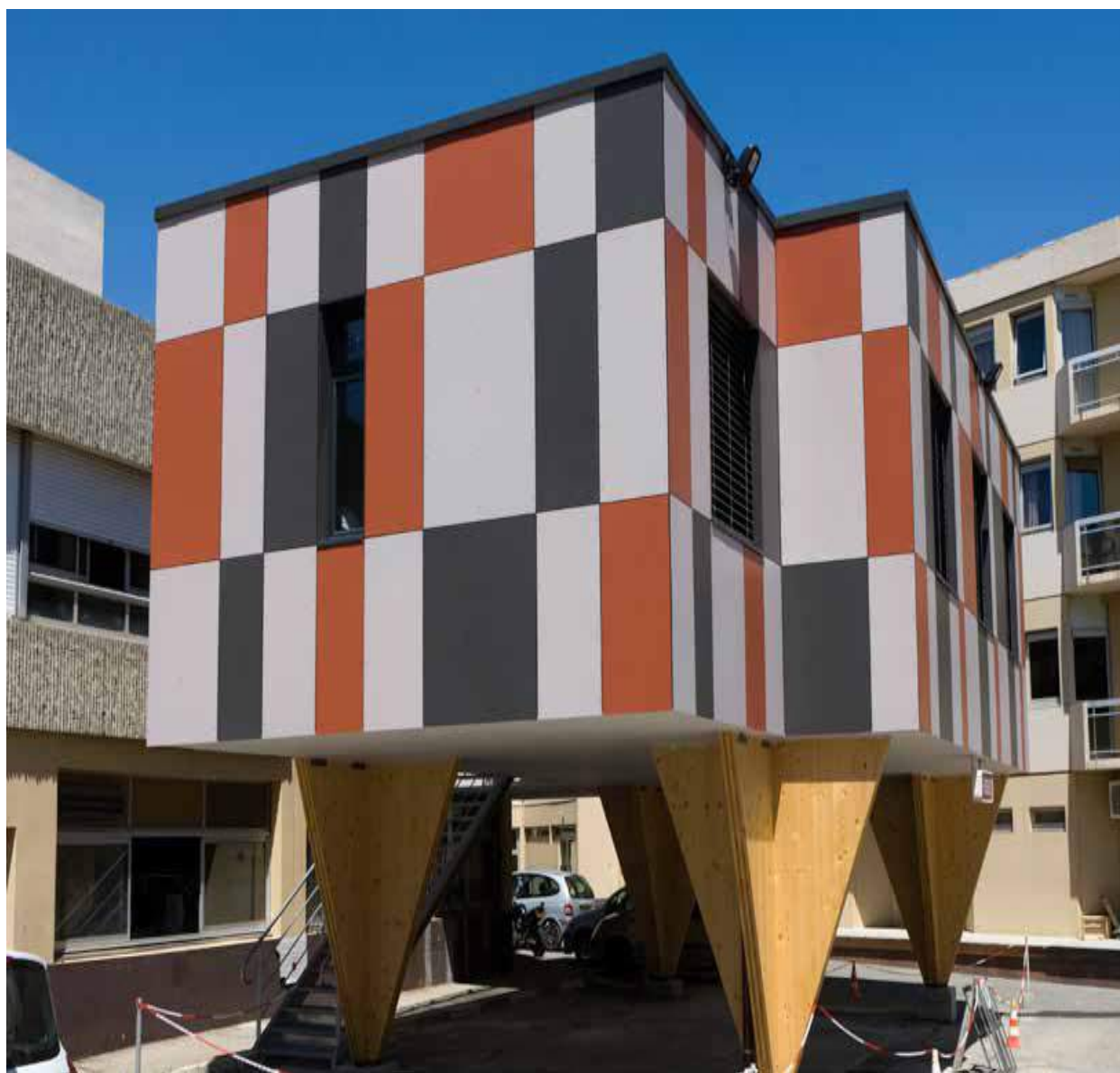
Smoke Grey



Charcoal Grey

**NOBODY WHO  
EVER GAVE  
THEIR BEST  
REGRETTED IT.**  
GEORGE HALAS







# WHY SQINOTECCH

---

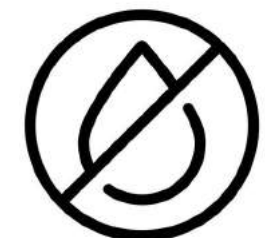


Fire Resistant

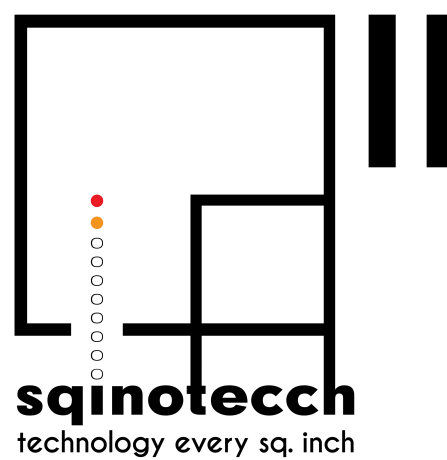
Lightweight

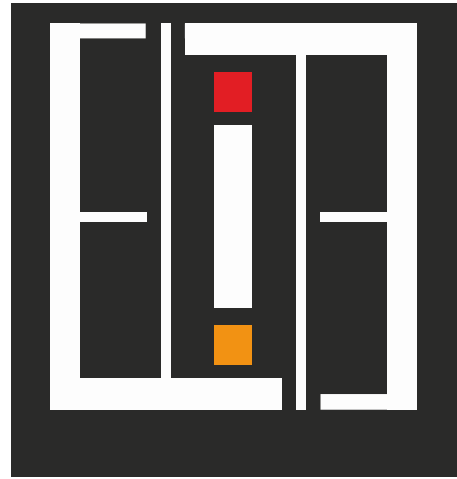


Sound Insulation



Low Moisture





---

A product by ELITE CORPORATION LLP

ELITE CORPORATION LLP

---

APURVA MAYANI

FOUNDER

+91 70211 45122 / +91 98195 99925

[info@sqinotecch.com](mailto:info@sqinotecch.com)

[www.sqinotecch.com](http://www.sqinotecch.com)

DISPLAY CENTER

---

Hindustan Associates,  
431 Maulana Azad Road, Duncan Road  
Near Goldeval Mandir, Mumbai- 400004

FACTORY ADDRESS

---

E-137 Epip,  
Riico Industrial Area, Neemran,  
Rajasthan - 301705