



**stontecch**

# STONTECCH

---

- THE BEAUTY OF STONE CLADDING MADE FAST AND EASY!

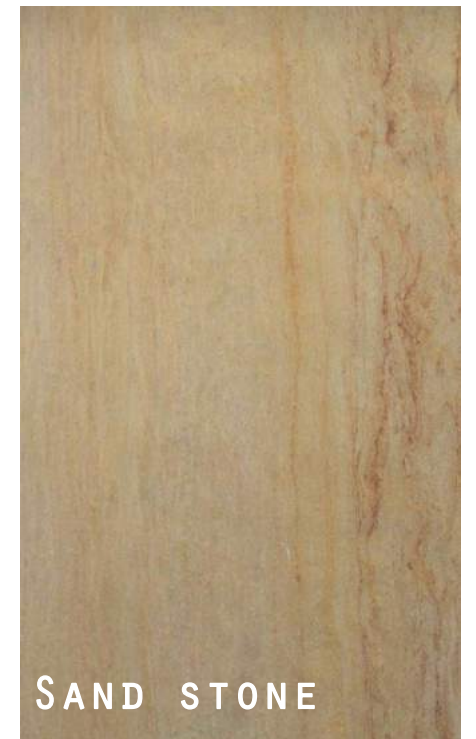


# STONTECCH

---

## GERMAN TECHNOLOGY – MADE IN INDIA

- A revolutionary, new and exciting product, created by chemically extracting raw materials from actual quarried slate, quartzite and sandstone slabs into thin layers of stone.
- These stone layers are bonded to a strong polyester resin reinforced with fibre-glass backing under controlled pressure and heat to produce a strong, yet flexible panel of Real Stone.
- Special Water Repellant Top Coat ensures longevity of the top surface and reduces maintenance cycle.





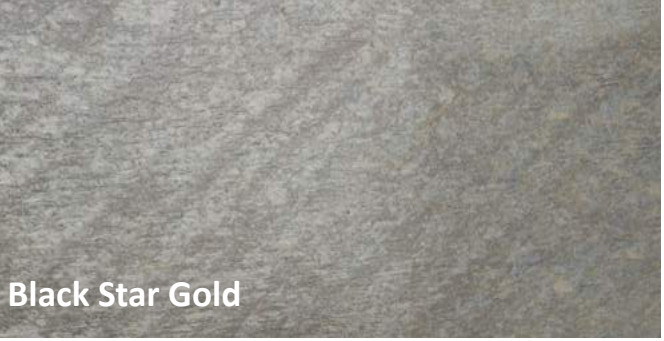
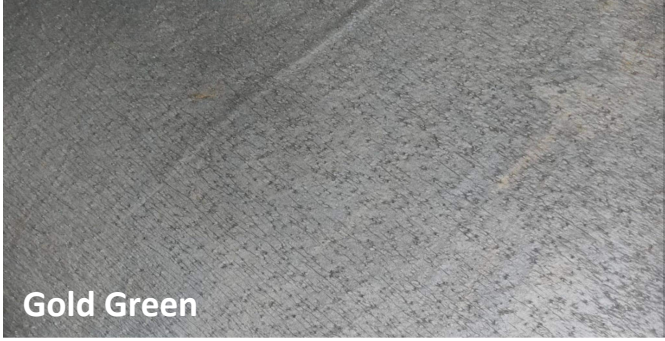
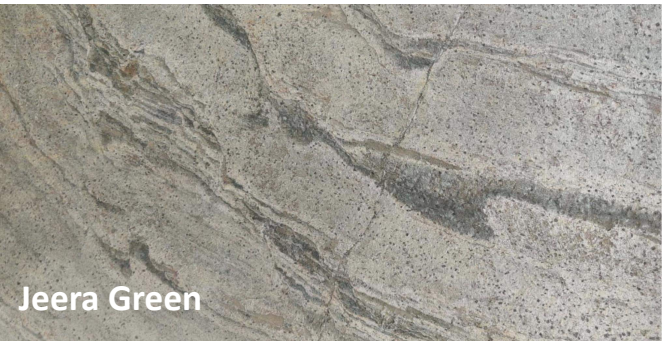
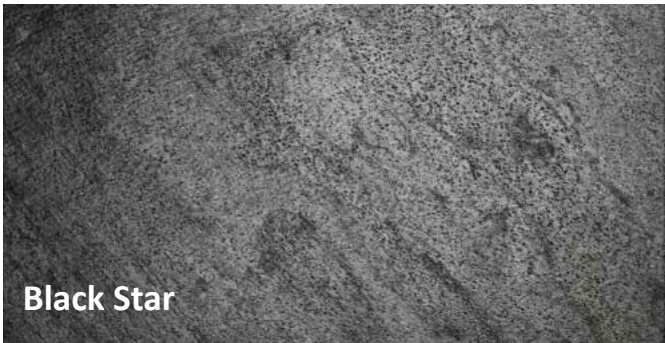
## SPECIFICATIONS

- THICKNESS : 4MM TO 8MM
- SIZES : 2FT X 4FT  
4FT X 8FT
- WEIGHT : 10-12KG | 2FT X 4FT  
45-50KG | 4FT X 8FT
- FIRE RATED : YES
- TEMP. RESIST : -40°C TO +90°C
- INSTALLATION: DRY CLADDING, WET CLADDING

# QUARTZITE

Quartzite is a non-foliated metamorphic rock that consists mostly of quartz. The rock has a grainy surface with a sandpaper texture, but polishes to a glassy shine.

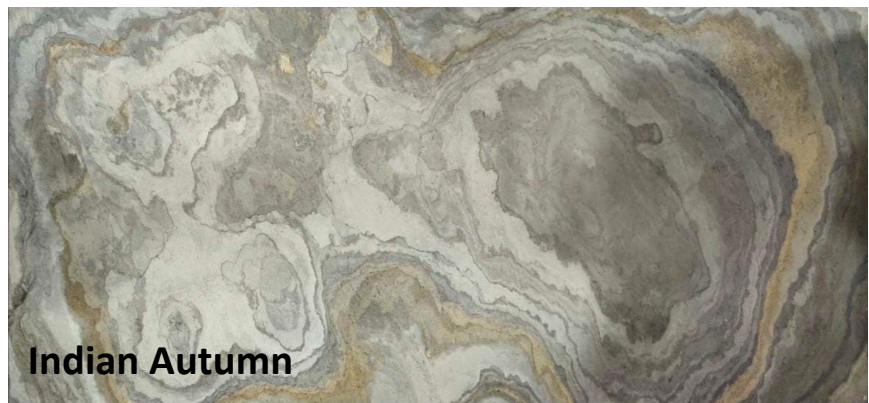
Our natural thin quartzite stontecch panel has a wide range of uses in both domestic and commercial applications.



# SLATE

Slate is a metamorphic rock composed of clay or volcanic ash. It is an extremely dense stone, known for its low rate of water absorption.

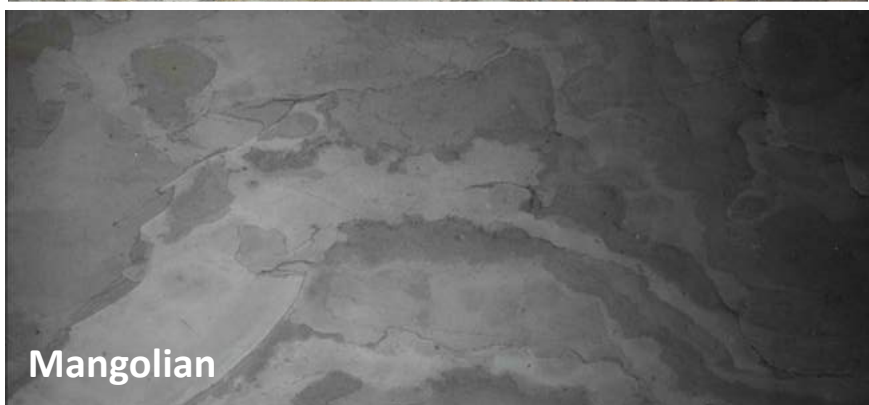
Our thin slate panel offers a durable, water resistant and natural look without the weight of a full slab of stone.



**Indian Autumn**



**Black slate**



**Mangolian**



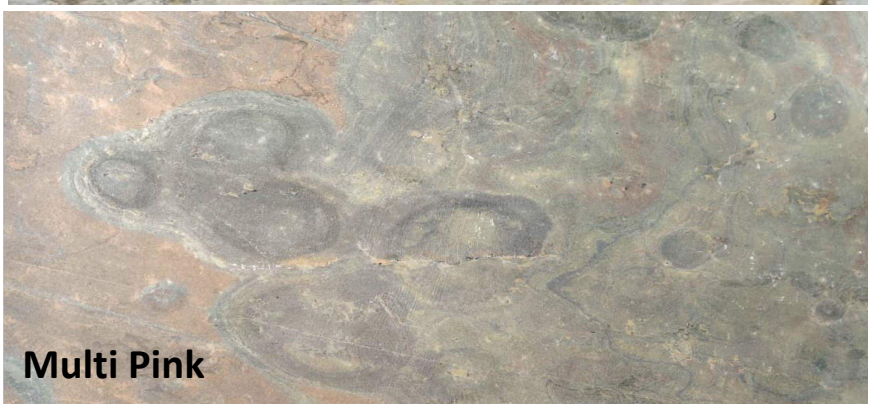
**Autumn White**



**Forest**



**Tera Red**



**Multi Pink**

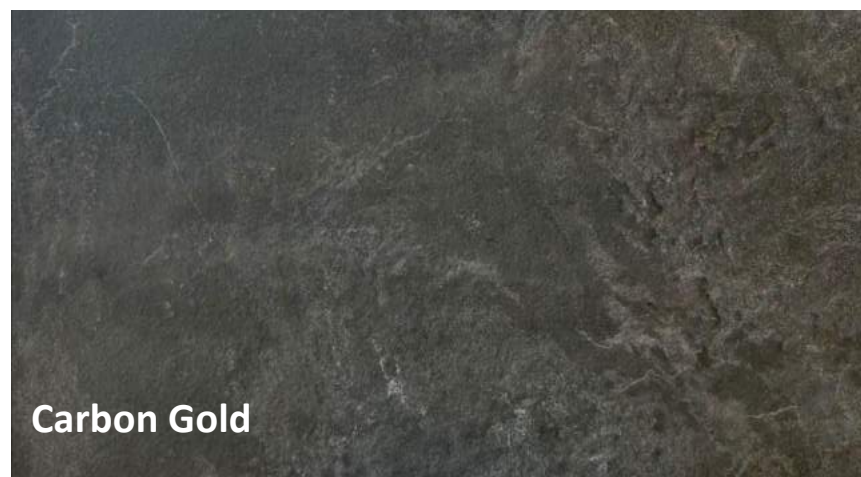
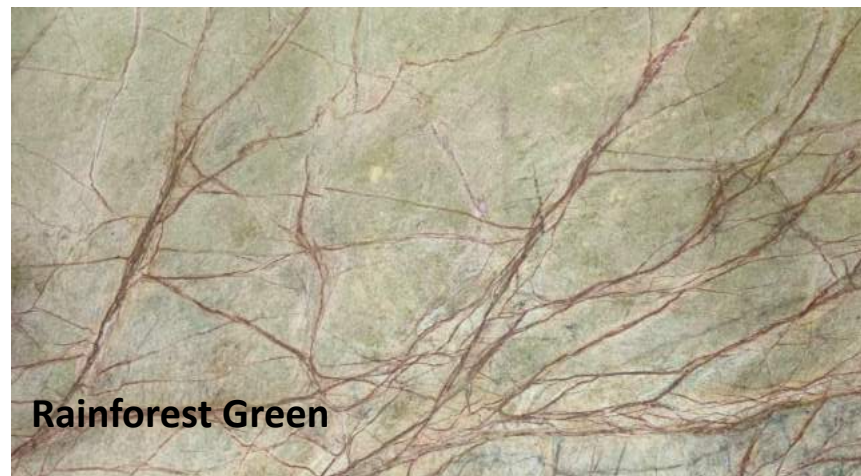


**Autumn Rustic**

# MARBLE

Marble has been used for centuries in sculpture and architecture. It forms in a spectrum of colors and is valued for its intricate vein and swirl demarcation.

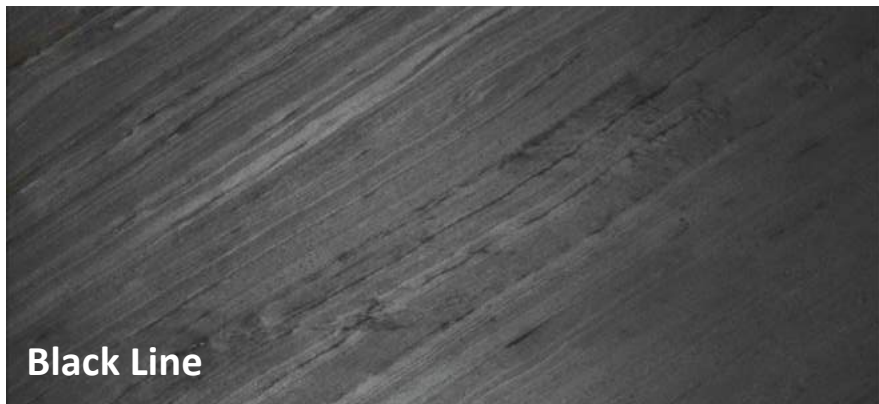
Our thin marble panel provide a timeless look, with a natural malleability to flex this durable material in place you'd have never thought possible.



# L I M E S T O N E

Limestone is a sedimentary rock composed mainly of calcium carbonate, usually in the form of calcite or aragonite and high pressure, high moisture environments like hot springs. Widely adopted in modern building for facades.

Our thin limestone panel makes a variety of applications possible.

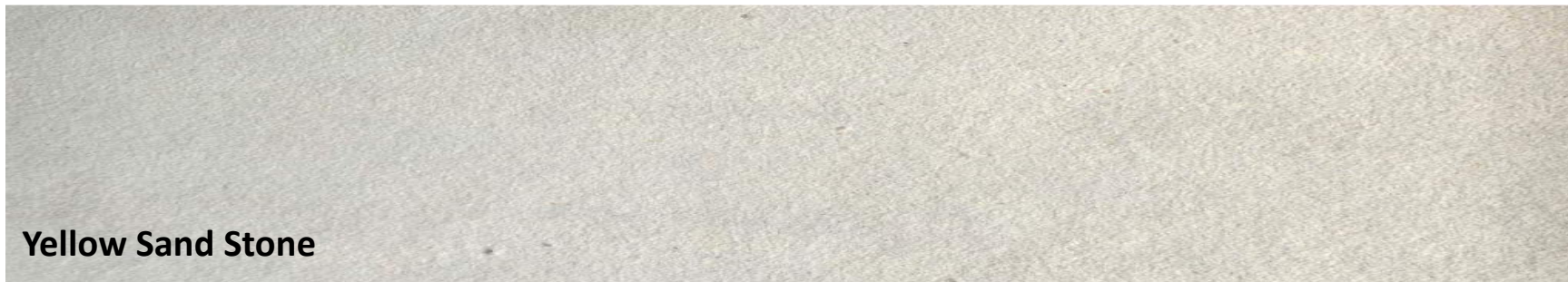


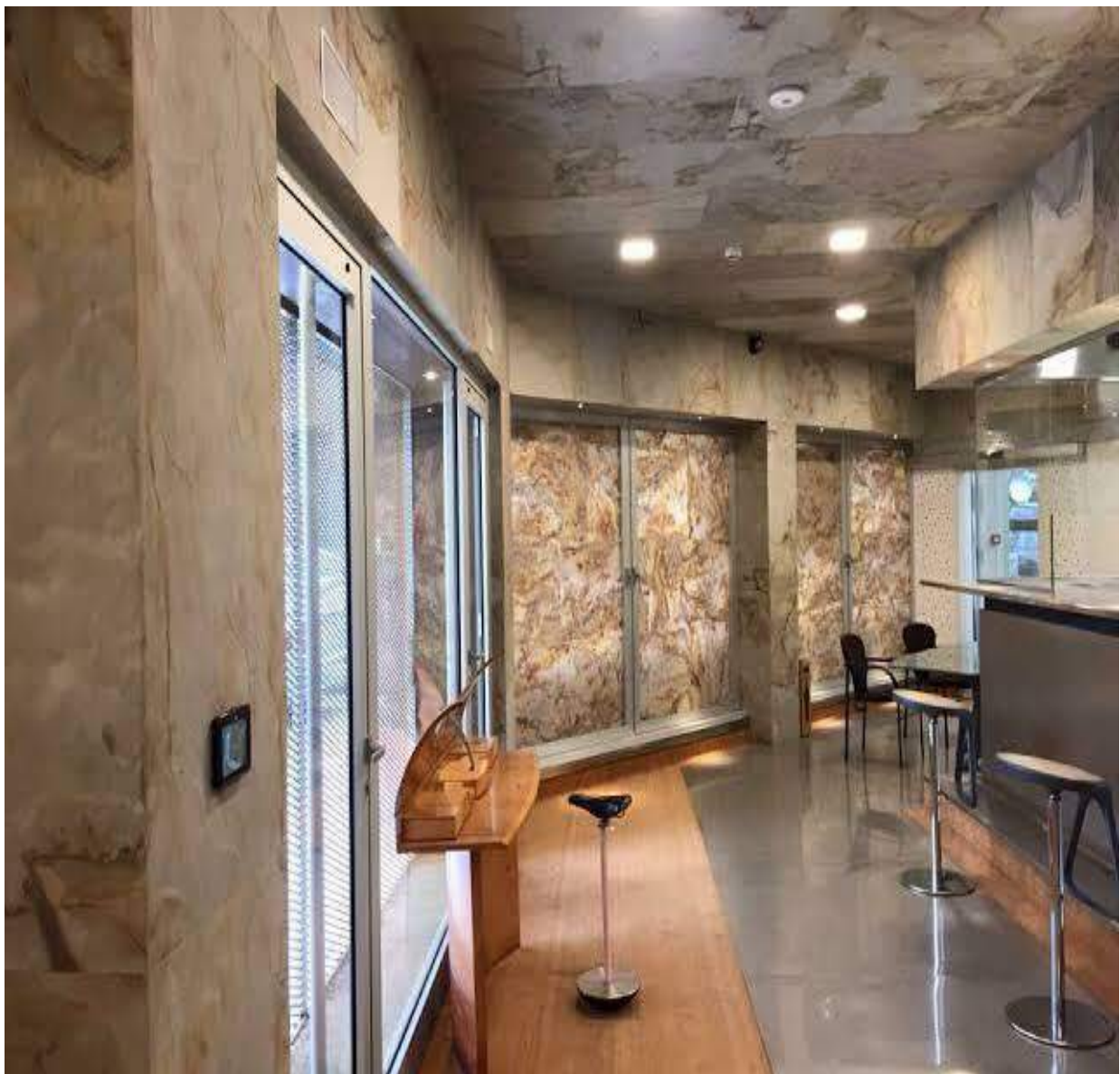
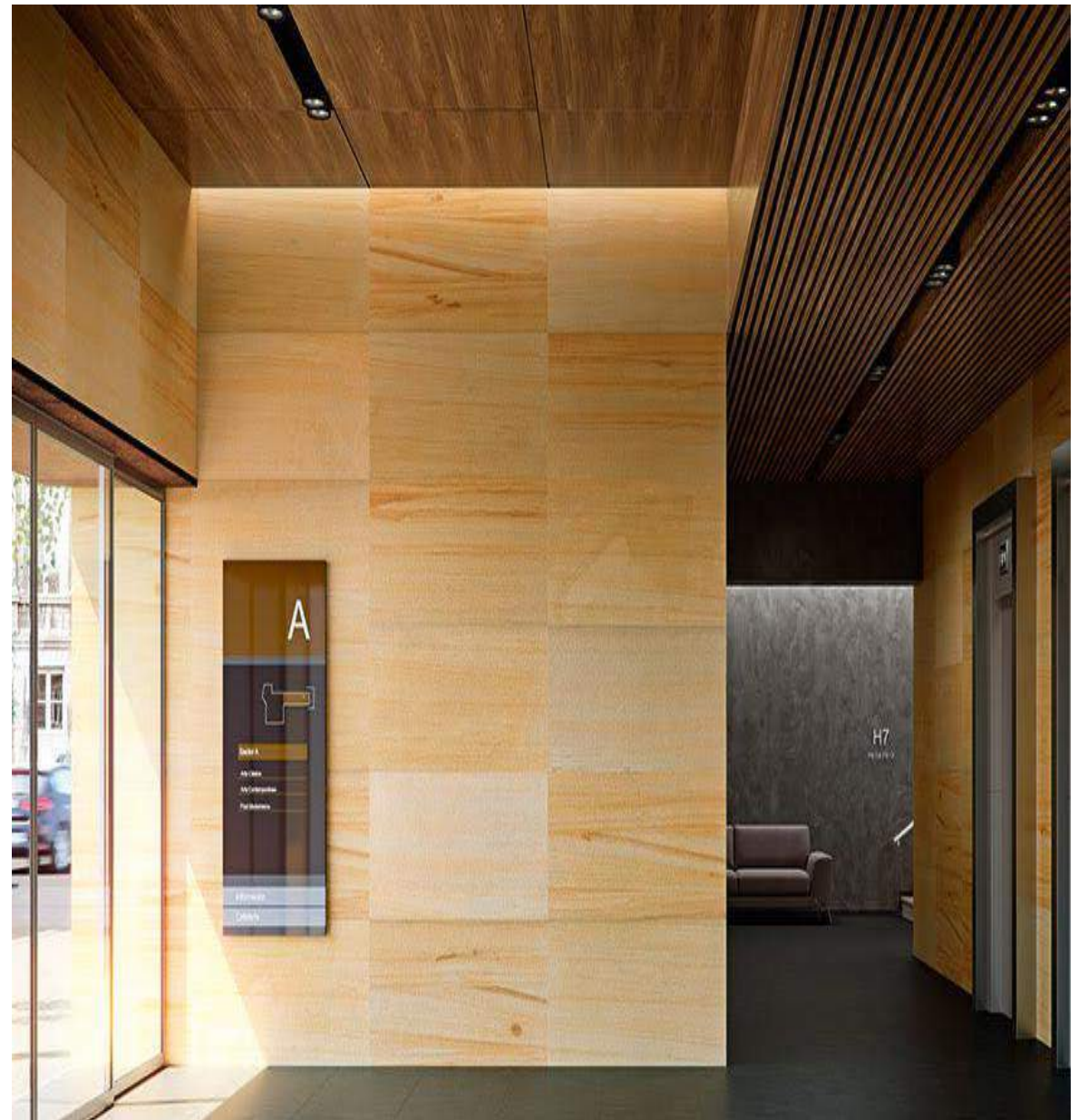


# SAND STONE

Sandstone is a sedimentary rock formed from grains of sand, most notably quartz. Because it is composed of light colored minerals, sandstone is typically light tan in color.

Our thin sandstone panels are truly remarkable.

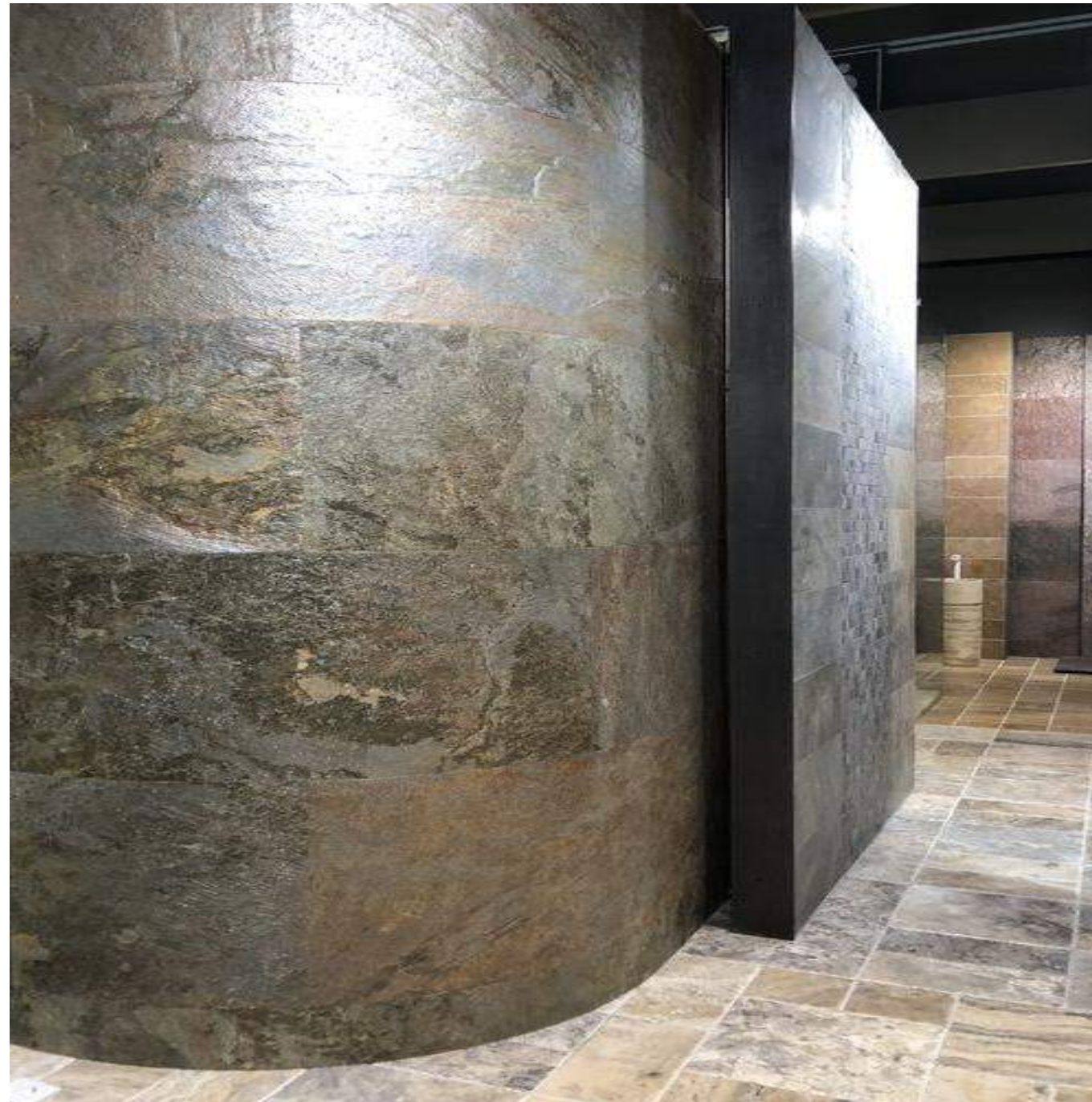






# FLEXTONE

- BEND IT, SHAPE IT!



# FLEXTONE

---

A panel with a backing made from a composite **Polymer** that makes it ultra-light weight, yet strong and bendable.

An incredible benefit of this product is its enhanced flexibility that allows you to install the product on any curved surface such as round columns or walls.

- ✓ Bendable up to 60°
- ✓ Available in a variety of **60** Indian Stones

## SPECIFICATIONS

- THICKNESS : 2.5MM TO 4.5MM
- SIZES : 2FT X 4FT  
4FT X 8FT
- FIRE RATED : ON DEMAND
- INSTALLATION: WET CLADDING





# LIT TONE

- UNIQUE NATURAL LOOK AND TIMELESS BEAUTY!



# LIT TONE

---

These panels are engineered with a thin layer of real natural stone plus a translucent fiberglass / polyester resin backing.

When back-lighting is used on Littone Panels fabricated from these stones, their ability to transmit light gives them a luminous appearance.

Illumination also reveals the subtle details of the complex patterning found in these extraordinary stones.

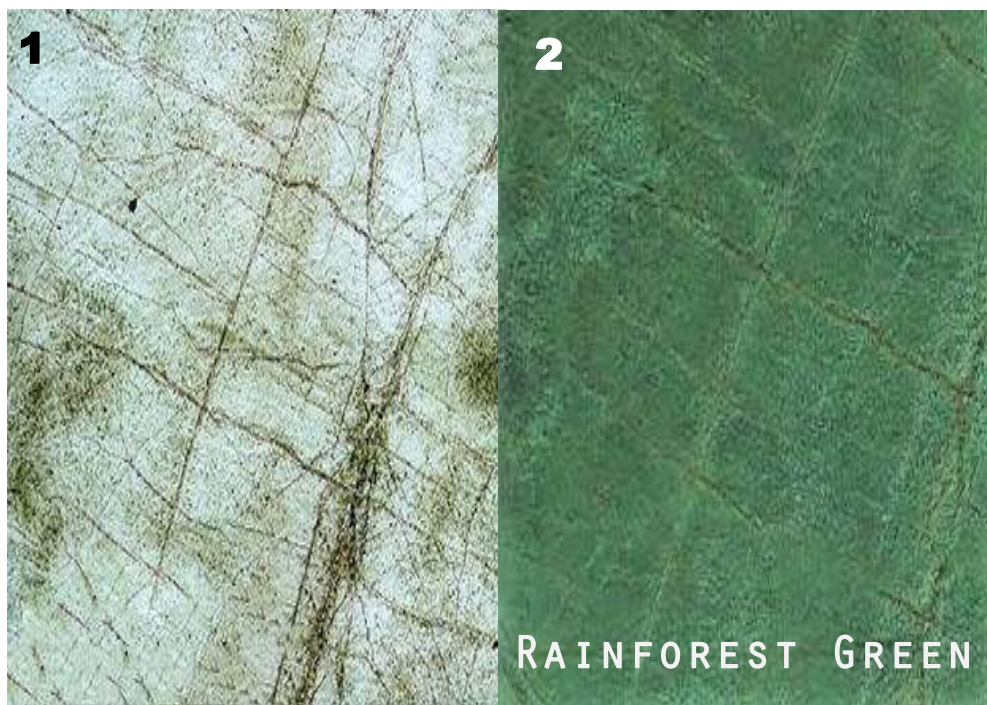
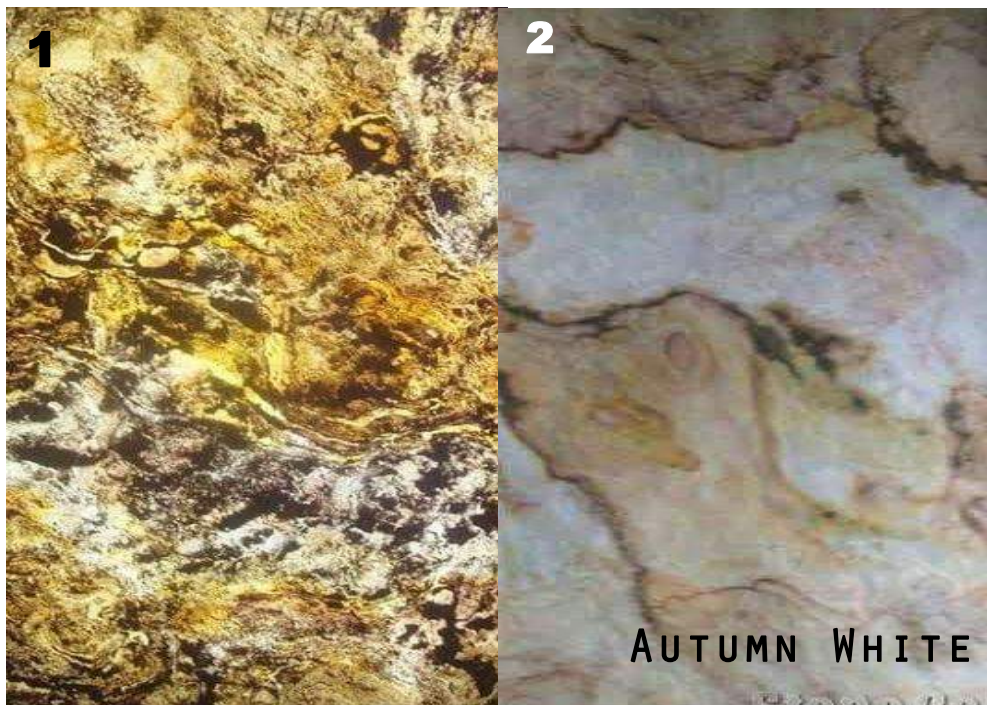
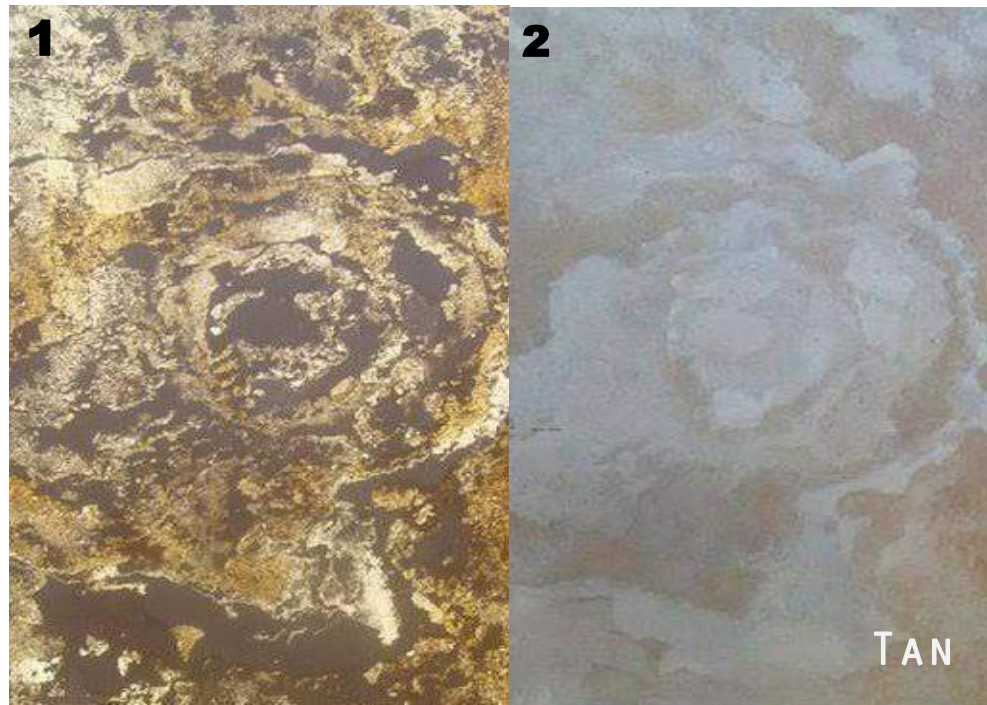
- ✓ Can bendable up to 60°
- ✓ Available in a variety of 60 Indian Stones

## SPECIFICATIONS

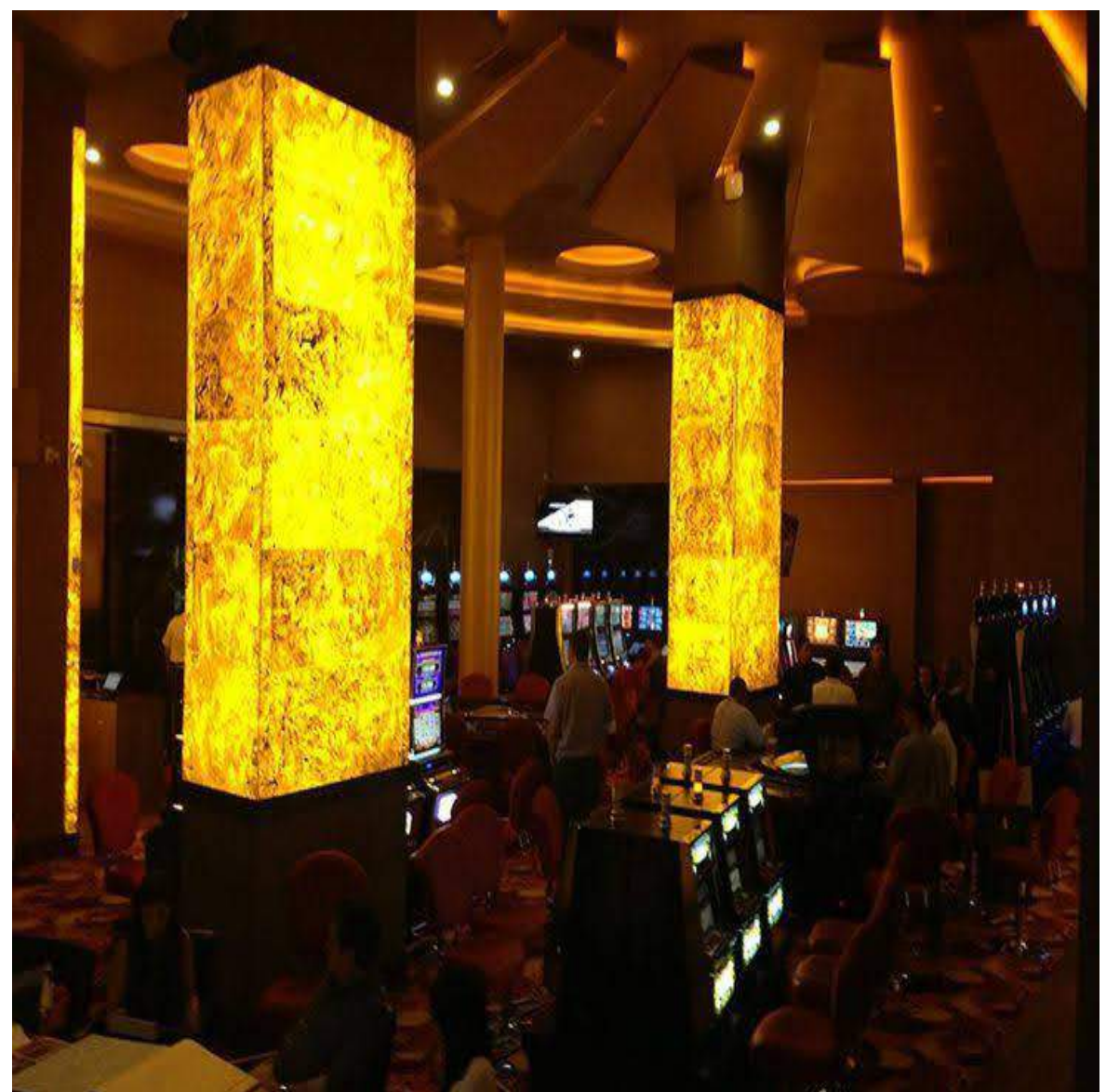
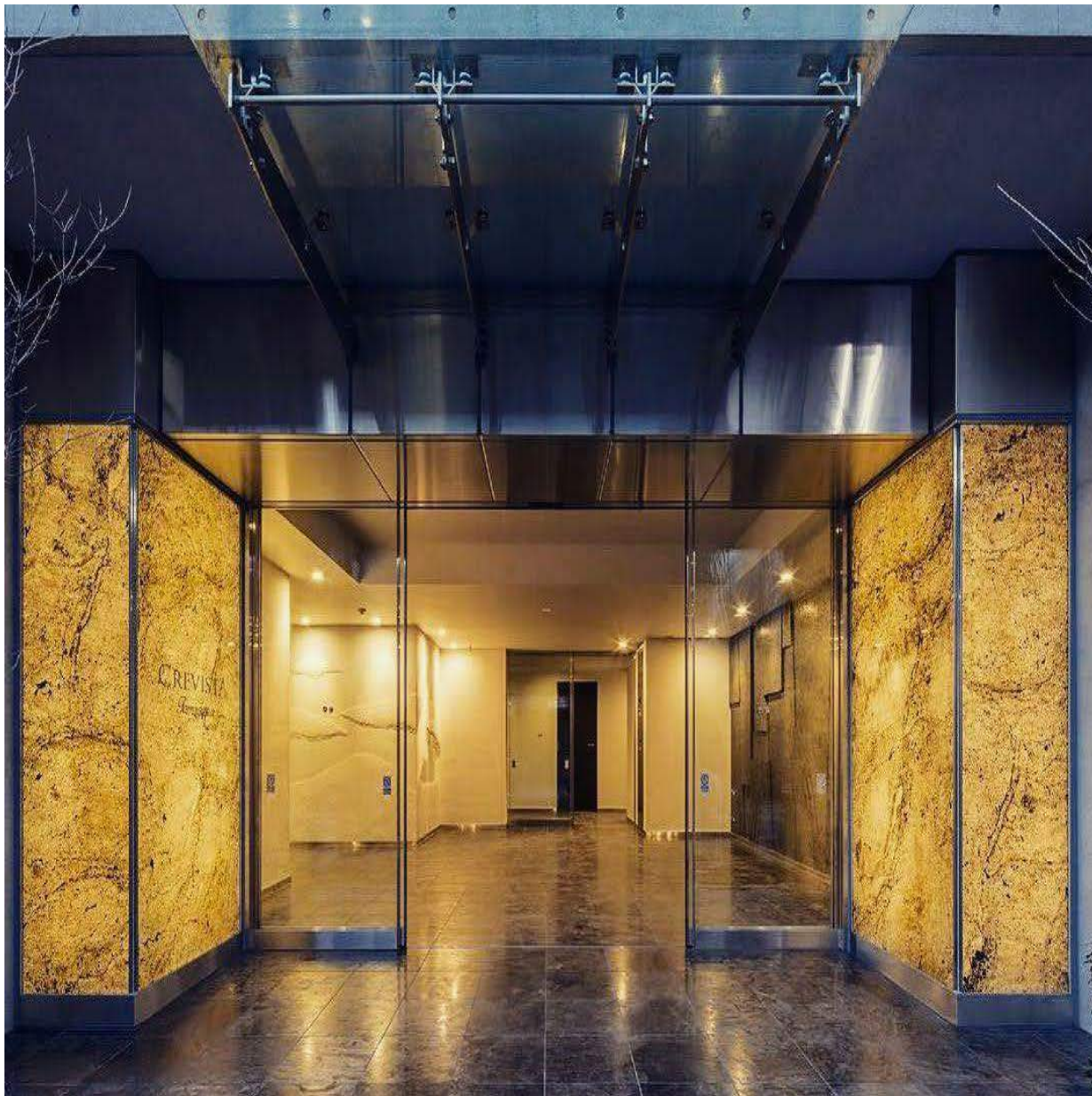
- THICKNESS : 3MM TO 5MM
- SIZES : 2FT X 4FT  
4FT X 8FT
- FIRE RATING : NOT FIRE RATED
- INSTALLATION: DRY CLADDING







1 - WITH A BACK LIGHT EFFECT , 2 - EFFECT WITH NO BACK LIGHT



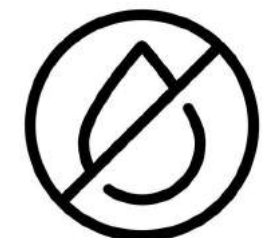
# WHY SQINOTECCH

---



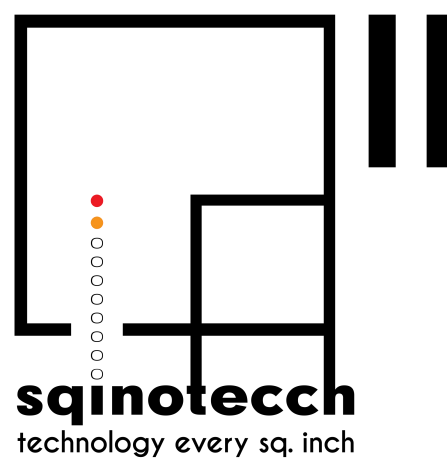
Fire Resistant

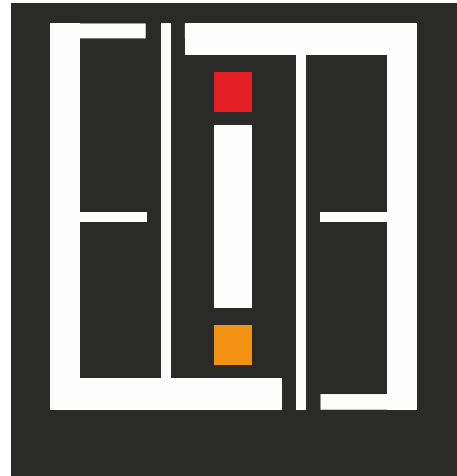
Lightweight



Sound Insulation

Low Moisture





---

A product by ELITE CORPORATION LLP

ELITE CORPORATION LLP

---

APURVA MAYANI

FOUNDER

+91 70211 45122 / +91 98195 99925

[info@sqinotecch.com](mailto:info@sqinotecch.com)

[www.sqinotecch.com](http://www.sqinotecch.com)

DISPLAY CENTER

---

Hindustan Associates,  
431 Maulana Azad Road, Duncan Road  
Near Goldeval Mandir, Mumbai- 400004

FACTORY ADDRESS

---

E-137 Epip,  
Riico Industrial Area, Neemran,  
Rajasthan - 301705